

# DESMI Group

Wholly owned companies unless otherwise stated

## Shareholders:

OEP - One Equity Partner (75%)  
ManCo ApS (25%)

Flow Danish TopCo ApS  
Humphrey Lau

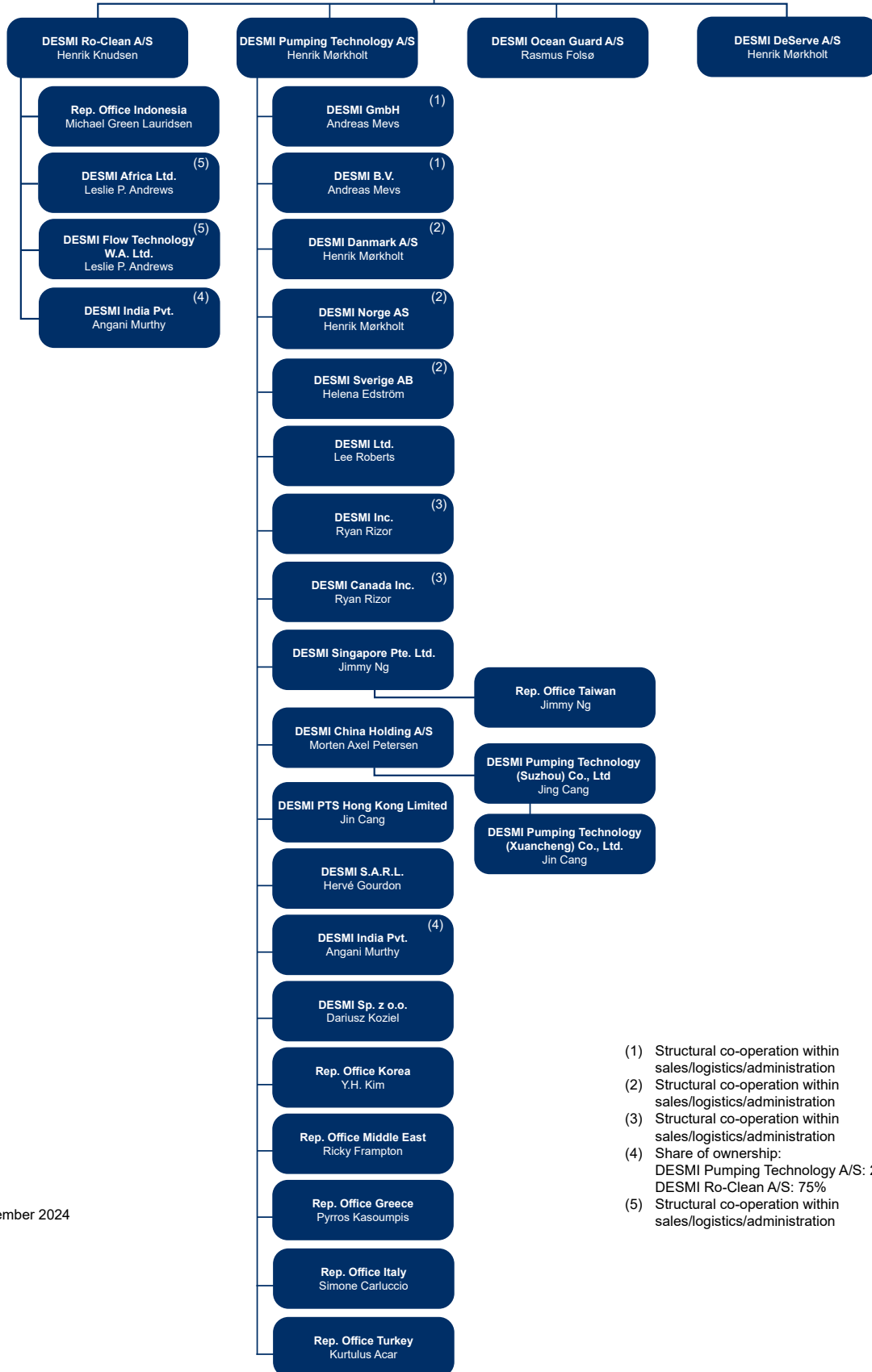
Flow Danish MidCo ApS  
Humphrey Lau

Danish BidCo ApS  
Humphrey Lau

DESMI A/S  
Humphrey Lau

## Board of Directors:

Niels Erik Olsen (Chairman)  
Humphrey Lau  
Morten Axel Petersen



- (1) Structural co-operation within sales/logistics/administration
- (2) Structural co-operation within sales/logistics/administration
- (3) Structural co-operation within sales/logistics/administration
- (4) Share of ownership:  
DESMI Pumping Technology A/S: 25%  
DESMI Ro-Clean A/S: 75%
- (5) Structural co-operation within sales/logistics/administration