

RO-BOOM 1500 - Heavy-duty oil containment boom

PROVEN OIL SPILL TECHNOLOGY

RO-BOOM 1500 - Heavy-duty oil containment boom

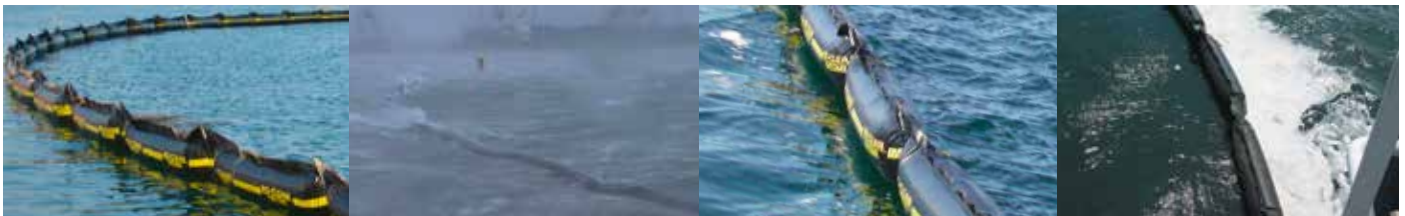
RO-BOOM 1500 is the most popular model of RO-BOOM ever produced by DESMI Ro-Clean. It is stored in large quantities in many response centres around the world, and has been deployed very successfully in many spills.

The RO-BOOM 1500 heavy-duty containment boom comes as standard with ASTM or hinge connectors and 4.5 metre air chambers.

RO-BOOM 1500 is made from a unique substrate compound of synthetic rubber with a CSM (Hypalon) external layer. This unique homogenous, single process construction has complete cross, hot vulcanisation of rubber and reinforcing fabrics. This seamless, flexible structure has very high abrasion resistance, peel resistance, tensile strength and will withstand the effects of sun, sea and oils which destroy many other booms.

The boom has moulded, inflatable chambers - the total freeboard is approximately 0.50 m, and the overall height of the boom in inflated condition is approx. 1.20 m. The individual buoyancy chambers have separate air valves, which mean that in the unlikely case of puncture only one chamber will lose air, and not impair the integrity of the boom.

The smooth surface of the deflated boom makes cleaning easier - several types of oil do not stick to the boom at all.



Advantages of RO-BOOM:

- A durable boom resistant to abrasion, oils and sunlight
- Individual air chambers for reliability and security
- Lies flat when deflated for easy storage and cleaning
- Stainless steel and hot galvanized components
- High visibility stripe
- Reels, containers and bags available
- Our most popular model
- Proven performance
- Rapid deployment
- Third layer of fabric at the chain attachment area for added strength

TECHNICAL DATA

RO-BOOM lies completely flat when deflated allowing for easy cleaning and storage. The individual air chambers provide high integrity. RO-BOOM is fitted with stainless steel fittings and a hot galvanized ballast/tension chain. Internal fibreglass rods secured with stainless steel brackets. These rods ensure optimum skirt profile under tow. ASTM quick connectors or stainless steel hinge connectors are fitted as standard.

Width (Deflated):	1.50 m / 59 in
Standard section lengths:	50, 100, 200 m / 164, 328, 656 ft
Freeboard:	0.50 m / 20 in
Operational depth of skirt:	0.70 m / 28 in
Operational weight (inclusive of chain):	12 kg/m / 8.0 lbs/ft
Buoyancy chamber length:	4.5 m / 177 in
Section connector:	ASTM
Section connector:	ASTM or Stainless steel hinge or pin
Tensile strength of boom wall:	315 N/mm / 1,795 lbs/in
Breaking load of chain:	200 kN
Operational temperature range:	-35°C to +70°C
Stored temperature range:	-40°C to +70°C

For more information on Oil Spill Response systems, please visit www.desmi.com

DESMI